



Kingfisher Court,
Burntwood, WS7 9QS

Offers in the Region Of £130,000

Offers in the Region Of £130,000



Welcome to Kingfisher Court, a well positioned top floor apartment offered for sale with NO ONWARD CHAIN.

Internally this spacious apartment has a welcoming entrance porch, hallway with storage, large lounge diner and modern kitchen with appliances included.

There is also a generous double bedroom with built in wardrobe and completing the living space is the bathroom with separate bath and shower.

The apartment also boasts fantastic views of the well kept communal gardens and nearby cricket field perfect for walks and those with pets.

Nearby amenities include easily accessible transport links, a handful of shops and also close proximity to Lichfield City Centre (approx 10 -15 mins).

CALL NOW TO VIEW!!!





Property Specification

SOUGHT AFTER LOCATION
TOP FLOOR APARTMENT
NO ONWARD CHAIN
ONE BEDROOM
SPACIOUS LIVING ROOM

Porch

Hall

Lounge/Diner 4.92m (16'2") x 3.69m (12'1")

Kitchen 3.83m (12'7") x 2.38m (7'10")

Bedroom 3.69m (12'1") x 3.26m (10'8")

Bathroom 2.45m (8') max x 1.75m (5'9")

Agent's Note:

Every care has been taken with the preparation of these Sales Particulars but they are for general guidance only and complete accuracy cannot be guaranteed. If there is any point which is of particular importance, professional verification should be sought. The mention of any fixtures, fittings and/or appliances does not imply they are in full efficient working order as they have not been tested. All dimensions are approximate. Photographs are reproduced for general information and it cannot be inferred that any item shown is included in the sale. These Sales Particulars do not constitute a contract or part of a contract.
Came on the market:

Viewer's Note:

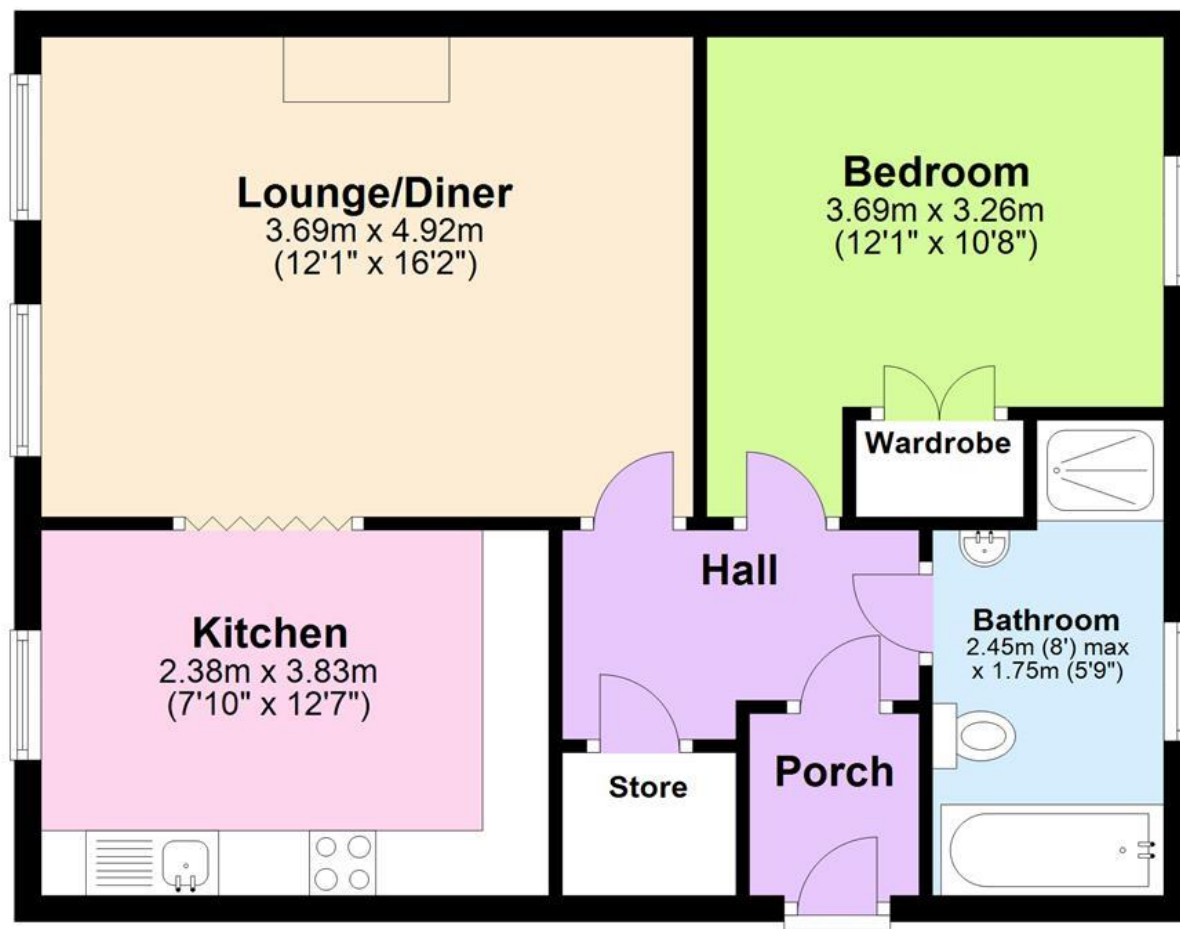
Services connected: Gas, Electric, Water, Drainage
Council tax band: A
Tenure: Leasehold years remaining 101 years
Ground Rent: £273.00
Service Charge: £1380.00

Floor Plan

This floor plan is not drawn to scale and is for illustration purposes only

Energy Efficiency Rating

Ground Floor



Map Location

